

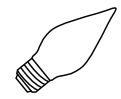


# Cayenne® Heat Strips – US List Prices

## CAYENNE® LIGHT STRIPS



40 Watt Bulb

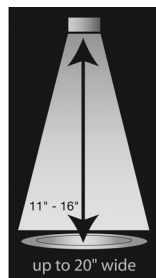


60 Watt Bulb\*  
Not for heat strip use

Length	40 Watt Standard Bulbs								60 Watt Display Bulbs							
	Standard Units				Standard Units with Extra Bulbs				Display Units				Display Units with Extra Bulbs			
	Item No.	Total No. of Bulbs	Amp Draw	List Price	Item No.	Total No. of Bulbs	Amp Draw	List Price	Item No.	Total No. of Bulbs	Amp Draw	List Price	Item No.	Total No. of Bulbs	Amp Draw	List Price
18" (47.7 cm)	7286000	2	0.7	249.40	n/a	n/a	n/a	n/a	7286002	2	1	249.40	n/a	n/a	n/a	n/a
24" (60.9 cm)	7286100	2	0.7	263.60	n/a	n/a	n/a	n/a	7286102	2	1	263.60	n/a	n/a	n/a	n/a
30" (76.2 cm)	7286200	2	0.7	275.70	7286201	4	1.4	328.40	7286202	2	1	275.70	7286203	4	1.4	328.40
36" (91.4 cm)	7286300	4	1.4	318.60	7286301	6	2	385.50	7286302	4	2	318.60	7286303	6	2	385.50
42" (106.6 cm)	7286400	4	1.4	332.80	7286401	6	2	397.60	7286402	4	2	332.80	7286403	6	2	397.60
48" (121.9 cm)	7286500	4	1.4	344.80	7286501	8	2.7	423.90	7286502	4	2	344.80	7286503	8	2.7	423.90
54" (137.1 cm)	7286600	6	2.1	399.70	7286601	8	2.7	478.80	7286602	6	3	399.70	7286603	8	2.7	478.80
60" (152.4 cm)	7286700	6	2.1	414.10	7286701	10	3.4	512.90	7286702	6	3	414.10	7286703	10	3.4	512.90
66" (167.6 cm)	7286800	6	2.1	440.30	7286801	10	3.4	538.20	7286802	6	3	440.30	7286803	10	3.4	538.20
72" (182.8 cm)	7286900	6	2.1	473.40	7286901	10	3.4	571.10	7286902	6	3	473.40	7286903	10	3.4	571.10

**Note:** Replacement bulbs — 40W item number 23236, list price \$11.60 — 60W item number 23026, list price \$11.60

## CAYENNE® HEAT STRIPS WITH PRE-INSTALLED CORD AND PLUG



Length	Medium Wattage		
	Callrod Wattage	Without Lights	
		Item No.	List Price
18"	415	72672019	278.90
24"	550	72675019*	293.20
30"	690	72678019	307.50
36"	825	72681019*	329.50
42"	965	72684019	343.70
48"	1100	72687019*	359.20
60"	1380	72693019	409.70

\* Stock item.

## Legs

Leg Style	Item No.	For Use With	Case Lot	List Price
<b>T-Leg</b> Adjustable 8" to 15" (22.8 to 38.1 cm)	44504	Medium Wattage Units	Set of 2	286.80
<b>C-Leg</b> 13" (33.0 cm)	4450613	Medium Wattage Units		151.50

Note: UL requires all cord and plug heat strips, from all manufacturers be mounted on legs.



T-Leg

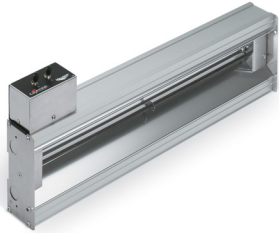


C-Leg

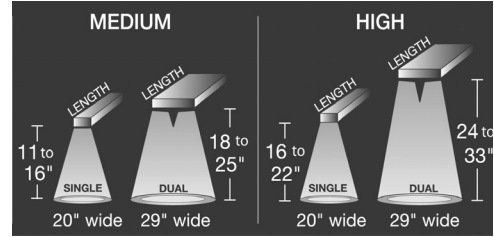
For Kool-Touch® trim and replacement bulbs, See page 3.



## CAYENNE® HARD WIRED HEAT STRIPS



- Select wattage then:
1. Select length.
  2. Select single or dual, lights & voltage.
  3. Select control.
  4. Select accessories. (See page 3.)



**Note:** Wattage recommendations are based on enclosed pass-throughs as required by UL. Performance may vary based on the conditions of each individual environment.

### Medium Wattage - Hard Wired\*

Step 1 Find Base Unit			
Length	Calrod Wattage		Base Item No.
	Single	Dual	
18"	415	830	72702
24"	550	1100	72705
30"	690	1380	72708
36"	825	1650	72711
42"	965	1930	72714
48"	1100	2200	72717
54"	1240	2480	72720
60"	1380	2760	72723
66"	1515	3030	72726
72"	1660	3320	72729
84"	1930	3860	72732

Step 2 Select Single or Dual, Without or With Lights and Voltage												
Suffix	Single						Dual					
	Without Lights			With Lights			Without Lights			With Lights		
	120V	208V	240V	120V	120/208V	120/240V	120V	208V	240V	120V	120/208V	120/240V
	01	02	03	11	12	13	21	22	23	31	32	33
	List Price			List Price			List Price			List Price		
	247.00			380.00			620.00			685.00		
	266.00			399.00			654.00			720.00		
	281.00			444.00			716.00			798.00		
	300.00			498.00			783.00			878.00		
	312.00			547.00			839.00			956.00		
	331.00			597.00			909.00			1032.00		
	346.00			643.00			962.00			1109.00		
	380.00			711.00			1067.00			1227.00		
	419.00			786.00			1165.00			1340.00		
	477.00			870.00			1308.00			1492.00		
	550.00			1004.00			1521.00			1748.00		

Step 3* Add Price for Control		
Control Suffix and Description		List Price
<b>Onboard Toggle 9</b> – Front Wire		10.00
<b>OEM Control 5</b> – End Wire <b>51</b> – Front Wire		27.00
<b>Remote Toggle 6</b> – End Wire <b>61</b> – Front Wire		89.00
<b>Remote Infinite Switch 7</b> – End Wire <b>71</b> – Front Wire	10A or lower	112.00
	10.1A - 20A (includes 1 relay switch)	206.00
	20.1A - 40A (includes 2 relay switches)	288.00

\*Stock Items: 72705019 – 24" 120V Medium Wattage Single with Onboard Toggle  
72711019 – 36" 120V Medium Wattage Single with Onboard Toggle  
72717019 – 48" 120V Medium Wattage Single with Onboard Toggle

\* Controls cannot be retro fitted.

### High Wattage - Hard Wired

Step 1 Find Base Unit			
Length	Calrod Wattage		Base Item No.
	Single	Dual	
18"	540	1080	72703
24"	720	1440	72706
30"	900	1800	72709
36"	1080	2160	72712
42"	1260	2520	72715
48"	1435	2870	72718
54"	1615	3230	72721
60"	1800	3600	72724
66"	1980	3960	72727
72"	2160	4320	72730
84"	2520	5040	72733

Step 2 Select Single or Dual, Without or With Lights and Voltage												
Suffix	Single						Dual					
	Without Lights			With Lights			Without Lights			With Lights		
	120V	208V	240V	120V	120/208V	120/240V	120V	208V	240V	120V	120/208V	120/240V
	01	02	03	11	12	13	21	22	23	31	32	33
	List Price			List Price			List Price			List Price		
	272.00			405.00			645.00			710.00		
	285.00			418.00			673.00			739.00		
	303.00			466.00			738.00			820.00		
	322.00			520.00			805.00			900.00		
	338.00			573.00			865.00			982.00		
	350.00			616.00			928.00			1051.00		
	371.00			668.00			987.00			1134.00		
	401.00			732.00			1088.00			1248.00		
	*	431.00	*	798.00	*	1177.00	*	1352.00				
	*	496.00	*	889.00	*	1327.00	*	1511.00				
	573.00			1027.00			1544.00			1771.00		

\* Units are not available in 120V

Step 3* Add Price for Control		
Control Suffix and Description		List Price
<b>OEM Control 5</b> – End Wire <b>51</b> – Front Wire		27.00
<b>Remote Toggle 6</b> – End Wire <b>61</b> – Front Wire		89.00
<b>Remote Infinite Switch 7</b> – End Wire <b>71</b> – Front Wire	10A or lower	112.00
	10.1A - 20A (includes 1 relay switch)	206.00
	20.1A - 40A (includes 2 relay switches)	288.00

\* Controls cannot be retro fitted.

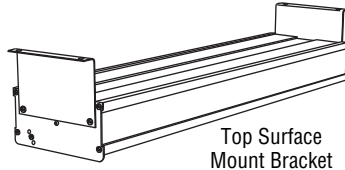
**MOUNTING ACCESSORIES**

**Hard Wired Mounting Brackets**

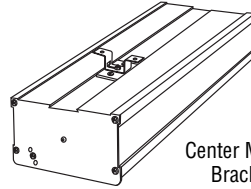
Use of Top Mount brackets is a common alternative to chain mounting.

**Non-Combustible surfaces may use 1" clearance. Combustible surfaces require 2" clearance.**

Center Mount brackets are suggested for units over 72" (182.8 cm) in length. They may be used alone, or in combination with Top Surface Mount brackets.



Top Surface Mount Bracket



Center Mount Bracket

Bracket Style	Item No.	Case Lot	List Price
Top Surface Mount* (2 per set)	1" (2.54 cm)	44545	1 25.20
	2" (5.08 cm)	44546	1 25.20
Center Mount	1" (2.54 cm)	44140	1 48.70
	2" (5.08 cm)	44145	1 48.70

Control Box Options
<p><b>End-Mounted Wiring Box</b> Available when ordering No Control, Remote Toggle, or Remote Infinite Switch control options</p>
<p><b>Front-Mounted Wiring Box</b> Available when ordering No Control, Remote Toggle, or Remote Infinite Switch control options</p>
<p><b>Hard-Wired Onboard Toggle</b> Available when ordering Onboard Toggle control option – supplied with 6" leads</p>

**Accessories for all Cayenne® Light and Heat Strips**

**Teflon®-Coated 40 Watt Shatterproof Light Bulbs**



Item No.	Unit Length	Number of Bulbs	Total Amp (120V)	Case Lot	List Price Each Bulb
23236	18" - 30"	2	.7	4 (no broken cases)	12.20
	36" - 48"	4	1.4		
	54" - 72"	6	2.1		
	84"	8	2.8		

**Kool-Touch® Trim, for All Styles**



Trim Length	Item No.	Case Lot	List Price
18" (45.7)	1789718	2	28.50
24" (60.9)	1789724	2	33.10
30" (76.2)	1789730	2	38.40
36" (91.4)	1789736	2	47.20
42" (106.6)	1789742	2	52.70
48" (121.9)	1789748	2	61.50
54" (137.1)	1789754	2	67.10
60" (152.4)	1789760	2	71.40
66" (167.6)	1789766	2	79.10
72" (182.8)	1789772	2	85.70

For lengths over 72" (182.8 cm), order trim in two pieces that equal the desired length. Some field trimming required.

**Effective January 1, 2018**

(supersedes all previously printed price lists)

The Vollrath Company, L.L.C.  
1236 North 18th Street  
Sheboygan, WI 53081-3201 U.S.A.  
Customer Service: 800.628.0830  
Canada Customer Service: 800.695.8560  
Main Fax: 800.752.5620 or 920.459.6573

Technical Services: 800.628.0832  
Technical Services Fax: 920.459.5462