



Outperform every day.™

Project:

Item Number:

Quantity:

Standard Contemporary Style Breath Guards

The Vollrath Company, L.L.C.

STANDARD CONTEMPORARY STYLE BREATH GUARDS



Double-Sided Buffet



Single-Sided Buffet



Single-Sided Buffet with Top Shelf



Cafeteria with Top Shelf

DESCRIPTION

Contemporary breath guards are both light weight for easy installation and strong for long-term use. These breath guards can be used with Signature Server® and over drop-ins.

FEATURES

- 1" (2.5 cm) stainless steel tubular construction is sleek, durable, easy to clean and enhances the food presentation
- Panels are 3/8" (9.5 mm) tempered glass with polished ends
- Available in brushed stainless steel, brass or black
- Mounts to stainless steel, solid surface and laminate countertops

WARRANTY

All models shown come with Vollrath's standard warranty against defects in materials and workmanship. For full warranty details, please refer to www.Vollrath.com.

BUILD A MODEL NUMBER

Step 1* Select Base Item		
Length	For Use With Signature Server® With Stainless Steel Countertops	For Use Over Drop-ins and Signature Server® With Non-Stainless Steel Countertops
Double-Sided Buffet		
2-Well/Pan	98663	CB98663
3-Well/Pan	98637	CB98637
4-Well/Pan	98638	CB98638
5-Well/Pan	98639	CB98639
6-Well/Pan	98640	CB98640
Single-Sided Buffet with Top Shelf		
2-Well/Pan	98662	CB98662
3-Well/Pan	98651	CB98651
4-Well/Pan	98652	CB98652
5-Well/Pan	98653	CB98653
6-Well/Pan	98654	CB98654
Single-Sided Buffet		
2-Well/Pan	98661	CB98661
3-Well/Pan	98633	CB98633
4-Well/Pan	98634	CB98634
5-Well/Pan	98635	CB98635
6-Well/Pan	98636	CB98636
Cafeteria with Top Shelf		
2-Well/Pan	98660	CB98660
3-Well/Pan	98650	CB98650
4-Well/Pan	98626	CB98626
5-Well/Pan	98627	CB98627
6-Well/Pan	98628	CB98628

* When ordering breath guards for Signature Server® bases with stainless steel countertops, 14 gauge countertops must be specified, will be supplied by Vollrath and added to the cost of the base.

Step 2 Select Color	
Suffix	Color
99	Stainless Steel
10	Brass
30	Black 80% Gloss

Optional Step 3 Select Accessories	
Not available for Single-Sided Buffet style	
Suffix	Length
Fluorescent Lights	
Not Available for 2-Well/Pan	
45	3-Well/Pan
14	4-Well/Pan
46	5-Well/Pan
51	6-Well/Pan
Incandescent Lights	
N/A	
Cayenne® Heat Strips	
52	2-Well/Pan
53	3-Well/Pan
54	4-Well/Pan
55	5-Well/Pan
56	6-Well/Pan
Cayenne® Heat Strips w/ Lights	
57	2-Well/Pan
58	3-Well/Pan
59	4-Well/Pan
90	5-Well/Pan
91	6-Well/Pan

Due to continued product improvement, please consult www.vollrath.com for current product specifications.



Approvals	Date



Outperform every day.™
www.vollrath.com

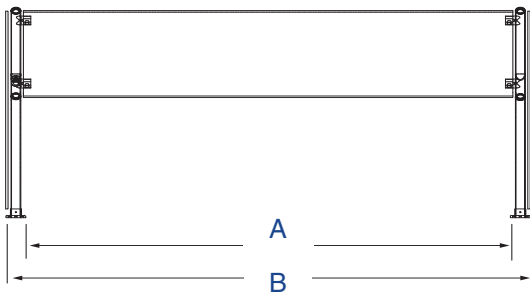
The Vollrath Company, L.L.C.
1236 North 18th Street
Sheboygan, WI 53081-3201 U.S.A.
Customer Service: 800.628.0830
Canada Customer Service: 800.695.8560
Main Fax: 800.752.5620 or

Technical Services: 800.628.0832
Technical Services Fax:
920.459.5462

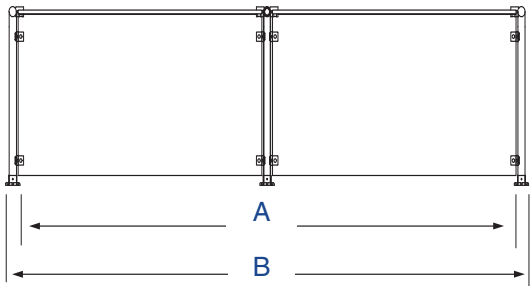
STANDARD CONTEMPORARY STYLE BREATH GUARDS

DIMENSIONS (shown in inches (cm))

Front View

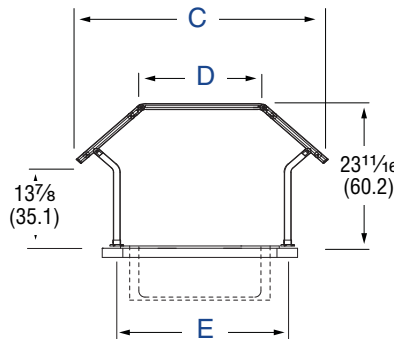


Double-Sided Buffet, Single-Sided Buffet with Top Shelf and Single-Sided Buffet

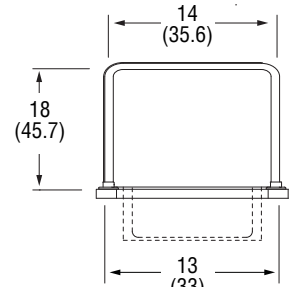


Single-Sided Cafeteria with Top Shelf

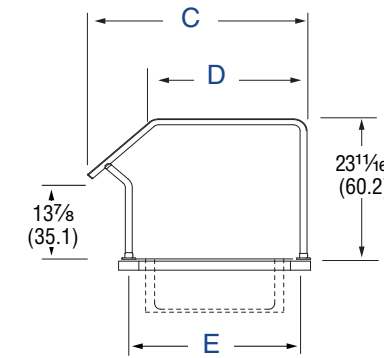
Side View



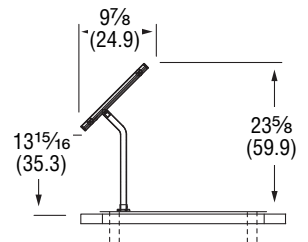
Double-Sided Buffet



Cafeteria with Top Shelf



Single-Sided Buffet with Top Shelf

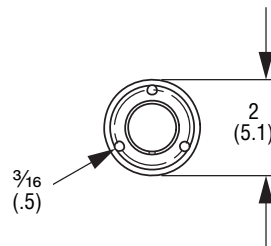


Single-Sided Buffet

Style	(A) Inside of Flange to Inside of Flange	(B) Outside of Flange to Outside of Flange
For Use With Signature Server® With Stainless Steel Countertops		
Two-Well/Pan	23 (58.4)	27 (68.6)
Three-Well/Pan	41 (104.1)	45 (114.3)
Four-Well/Pan	55 (139.7)	59 (149.9)
Five-Well/Pan	69 (175.3)	73 (185.4)
Six-Well/Pan	83 (210.8)	87 (221)
For Use Over Drop-ins or Signature Server® With Non-Stainless Steel Countertops		
Two-Well/Pan	30½ (77.5)	34½ (87.6)
Three-Well/Pan	43 (109)	47 (119.4)
Four-Well/Pan	56¼ (142.9)	60¼ (153)
Five-Well/Pan	69½ (176.5)	73½ (186.7)
Six-Well/Pan	82¾ (210.2)	86¾ (220.3)

Style	For Use With	C	D	E
Double-Sided Buffet	For use with Signature Server® with stainless steel countertops	36 ¹³ / ₁₆ (93.5)	19 ³ / ₁₆ (48.8)	25 (63.5)
	For use over drop-in or Signature Server® with non-stainless steel countertops	40 ¹³ / ₁₆ (103.6)	23 ³ / ₁₆ (58.9)	29 (73.7)
Single-Sided Buffet with Top Shelf	For use with Signature Server® with stainless steel countertops	31 ¹⁵ / ₁₆ (81)	21¼ (54)	25 (63.5)
	For use over drop-in or Signature Server® with non-stainless steel countertops	35 ¹⁵ / ₁₆ (91.2)	25¼ (64.1)	29 (73.7)

Base Plate



Outperform every day.™

www.vollrath.com

The Vollrath Company, L.L.C.
1236 North 18th Street
Sheboygan, WI 53081-3201 U.S.A.
Customer Service: 800.628.0830
Canada Customer Service: 800.695.8560
Main Fax: 800.752.5620 or

Technical Services: 800.628.0832
Technical Services Fax:
920.459.5462