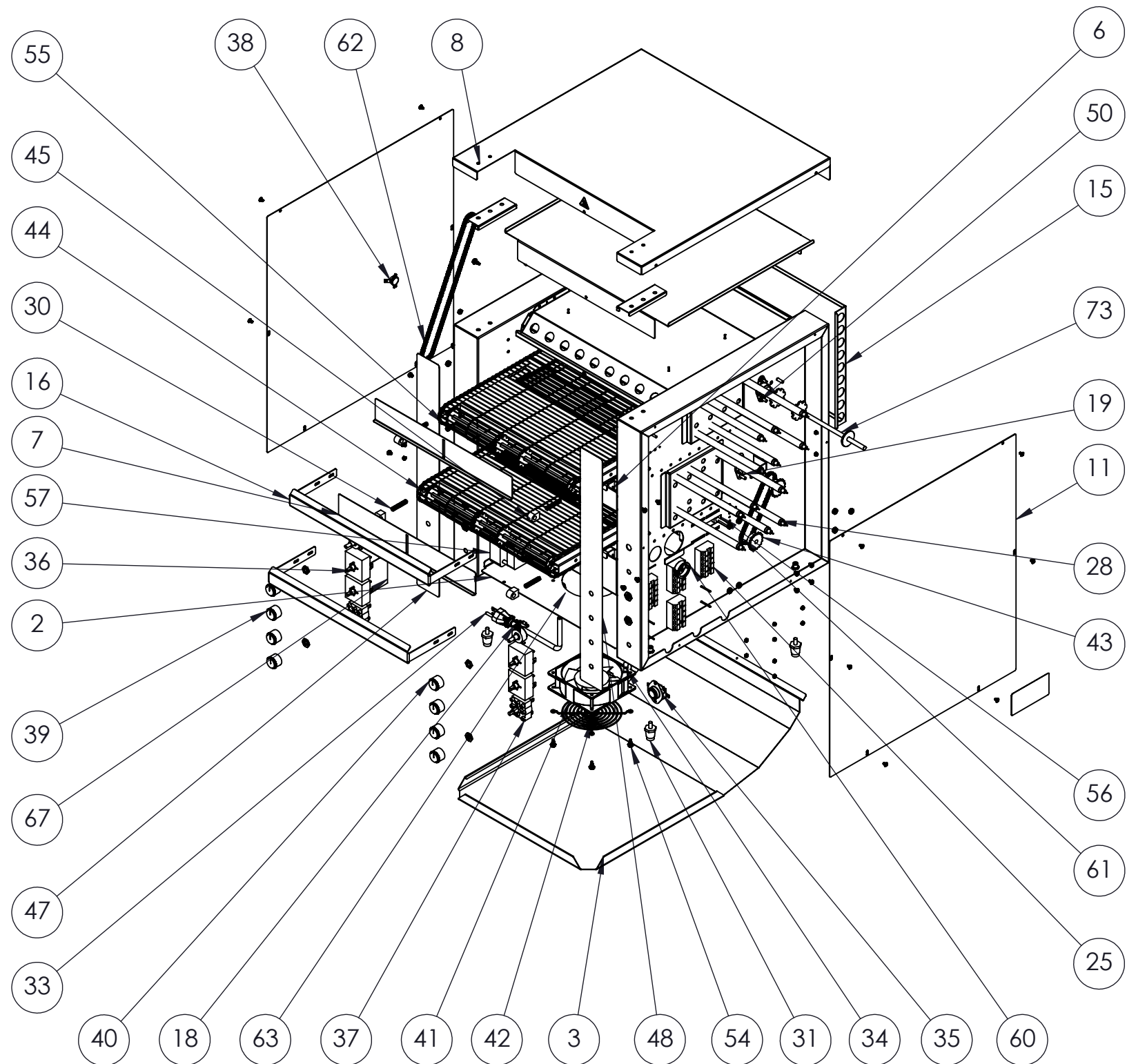




DUAL CONVEYOR TOASTER - 220V



ITEM NO.	PART NUMBER	DESCRIPTION	QTY.
2	B300005	CT4 18" CONTROL BOX COVER	1
3	B300013	CT4 18" TOAST CHUTE	1
6	B205129	SO2 14.5" CRUMB TRAY ASSM	2
7	B300059	CT4H 18" HEAT SHUTTER	2
8	B300233	CT4-DUAL TOP COVER	1
11	B300230	CT4-DUAL SIDE PANEL	2
15	B300248	CT4-DUAL STANDOFF	1
16	B300807	CT4-2000 NOSE GUARD	2
18	B200901	CONTROL, SPEED, 500 OHM CT4	2
19	B201100	BEARING ASSEMBLY 5/16"	4
25	B401033	TERMINAL BLOCK 5 POSITION	4
28	B204162	HEATERTUBE, QUARTZ 15 3/8 220V	12
30	B400261	SPRING, .038" DIA, 1.500" LENGTH	4
31	B400300	LEGS, BLACK 1" 1/4-20	4
33	B401051	CORD, POWER 12/3 60" 6-30P	1
34	B401060	CORD,FAN,HP-75.24-A	1
35	B401100	RESET SWITCH	1
36	B401102	SWITCH, 240V	4
37	B401103	SWITCH, ROTARY POWER	2
38	B401107	SWITCH FAN CERAMIC	1
39	B401186	KNOB, PUSH-ON	6
40	B401187	KNOB, PUSH-ON W/ SET SCREW	2
41	B401211	230V MOTOR, FAN	1
42	B401220	GUARD, FAN	1
43	B401300	SPROCKET, 25B17 X 8MM	4
44	B401349	IDLE SHAFT SO2 14.5"	2
45	B401352	BEARING, FRONT, SPRING-HOUSING	4
47	B401423	CT4-DUAL UPPER CHAMBER LABEL	1
48	B401424	CT4-DUAL LOWER CHAMBER LABEL	1
55	B205138	WIRE CONVEYOR BELT 14.5" X 41"	2
56	B401201	DRIVE MOTOR 208/240V RMS 344	1
57	B401203	DRIVE MOTOR, 208/240V REVERSED	1
61	B401386	CHAIN LADDER, 13.25"	1
62	B401387	CHAIN , LADDER, 26"	1
63	B400321	STRAIGHT 12 GA STRAIN RELIEF BUSHING	1
67	B401425	CT4 RESET LABEL	1
73	B401342	SHAFT, DRIVE, 14.5"	2