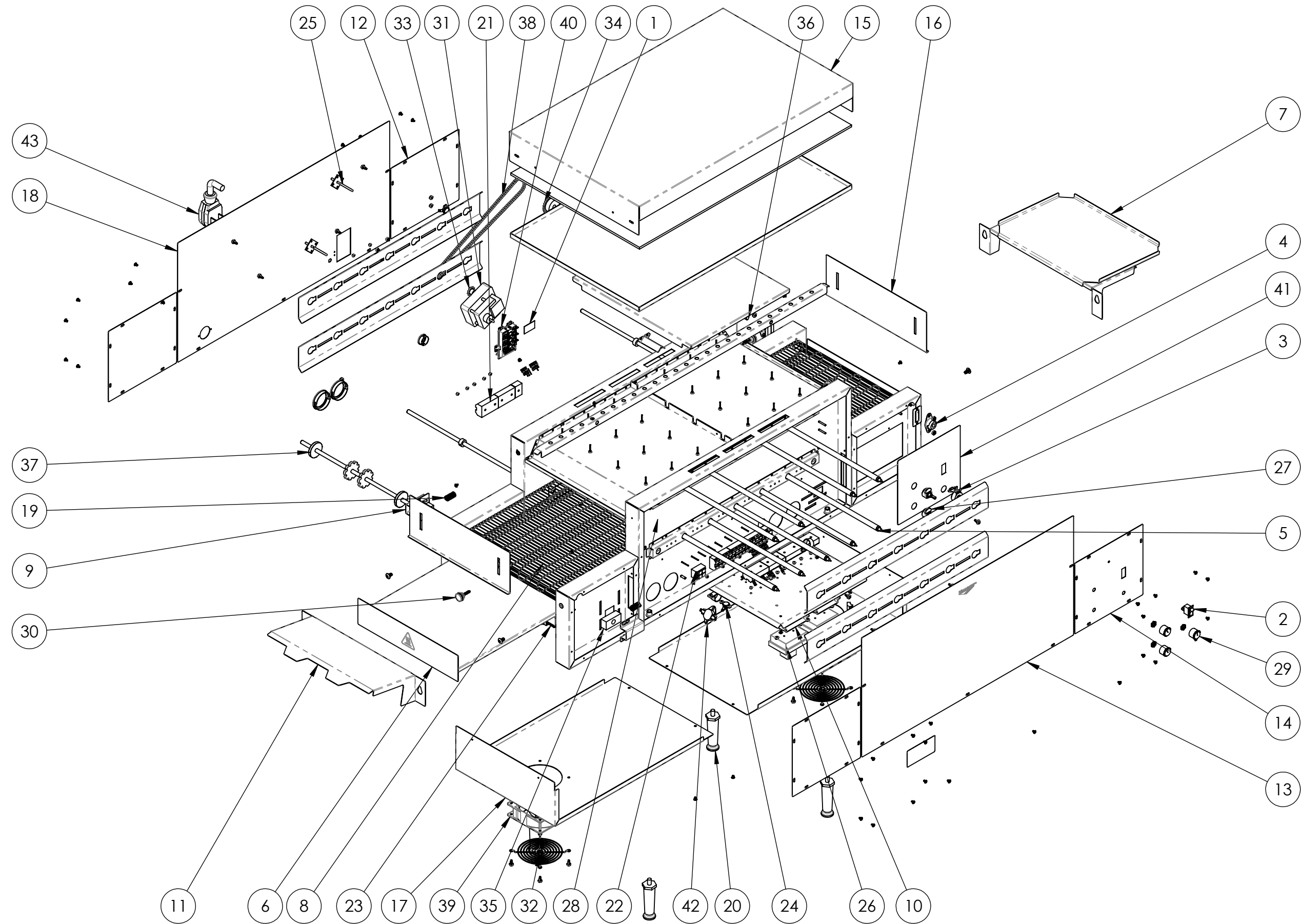




68 INCH CONVEYOR PIZZA OVEN 240V 14" LEFT TO RIGHT





68 INCH CONVEYOR PIZZA OVEN 240V 14" LEFT TO RIGHT

| ITEM NO. | PART NUMBER | DESCRIPTION | PO4-24014L-R QTY. |
|----------|-------------|--------------------------------------|-------------------|
| 1 | 324105 | POWER CAUTION STICKER | 1 |
| 2 | 719124 | SWITCH, ROCKER SPST 10A 125V | 1 |
| 3 | B200918 | SPEED CONTROL 1000 OHM | 1 |
| 4 | B201101 | 3/8" BEARING ASSEMBLY | 2 |
| 5 | B204159 | HEATERTUBE, QUARTZ 15 3/8" | 9 |
| 6 | B205103 | PIZZA OVEN - 14" CRUMB TRAY ASSEMBLY | 2 |
| 7 | B205104 | 14" UNLOAD TRAY ASSEMBLY | 1 |
| 8 | B205108 | JPO 14" WIRE BELT | 1 |
| 9 | B305756 | PIZZA OVEN - IDLER BEARING HOUSING | 2 |
| 10 | B305762 | PIZZA OVEN - CONTROL BRACKET | 2 |
| 11 | B305772 | 14" LOAD TRAY | 1 |
| 12 | B305796 | SMALL BLANK SIDE PANEL | 3 |
| 13 | B305797 | LONG BLANK SIDE PANEL | 1 |
| 14 | B305835 | CONTROL SIDE PANEL ANALOG | 1 |
| 15 | B305836 | 14" TOP COVER | 1 |
| 16 | B305837 | JPO 14" HEAT SHUTTER | 2 |
| 17 | B305839 | 14" CONTROL BOX COVER | 2 |
| 18 | B305856 | BLANK POWER SIDE PANEL | 1 |
| 19 | B400263 | SPRING, .480" DIA, 1.000" LENGTH | 2 |
| 20 | B400301 | METAL PLATED LEG 4" | 4 |
| 21 | B401033 | TERMINAL BLOCK 5 POSITION | 4 |
| 22 | B401034 | TERMINAL BLOCK 2 POSIITON | 1 |
| 23 | B401060 | CORD,FAN,HP-75.24-A | 2 |
| 24 | B401107 | SWITCH FAN CERAMIC | 2 |
| 25 | B401120 | THERMISTOR PROBE | 2 |
| 26 | B401121 | 30 AMP CONTROL | 2 |
| 27 | B401122 | POTENTIOMETER ASSEMBLY | 2 |
| 28 | B401162 | PLUG BUTTON, 1/2" | 1 |
| 29 | B401187 | KNOB, PUSH-ON W/ SET SCREW | 3 |
| 30 | B401188 | KNOB, W/10-32 STUD PHENOLIC | 4 |

| ITEM NO. | PART NUMBER | DESCRIPTION | PO4-24014L-R QTY. |
|----------|-------------|--------------------------------|-------------------|
| 31 | B401203 | DRIVE MOTOR, 208/240V REVERSED | 1 |
| 32 | B401220 | GUARD, FAN | 2 |
| 33 | B401301 | 11-TOOTH SPROCKET | 1 |
| 34 | B401304 | SPROCKET, 25B24 X 3/8 | 1 |
| 35 | B401353 | JPO SPRING LOADED BEARING | 2 |
| 36 | B401379 | PO4 14" DRIVE SHAFT | 1 |
| 37 | B401380 | PO4 14" IDLER SHAFT | 1 |
| 38 | B401460 | 29.75" CHAIN | 1 |
| 39 | B405011 | 230V CLASS B FAN MOTOR | 2 |
| 40 | B405013 | 41A INPUT MODULE | 1 |
| 41 | B405020 | PO4 CONTROL LABEL | 1 |
| 42 | B405028 | 68C THERMAL RESET | 1 |
| 43 | B405055 | 50A 10/3 72" COMPRESSED END | 1 |