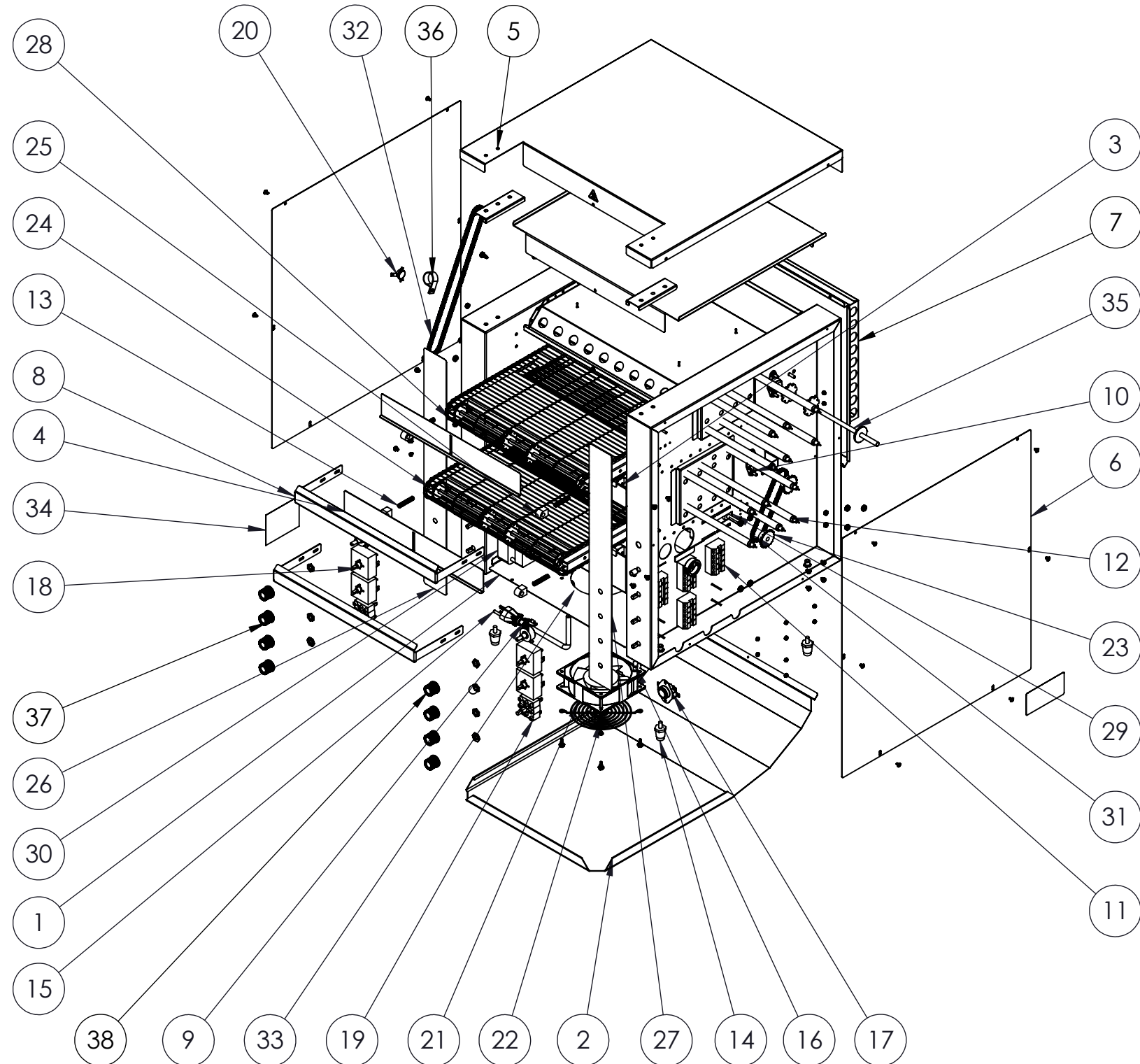




DUAL CONVEYOR TOASTER - 220V



| BOM Table |                                      |             |      |
|-----------|--------------------------------------|-------------|------|
| ITEM NO.  | DESCRIPTION                          | PART NUMBER | QTY. |
| 1         | CT4 18" CONTROL BOX COVER            | B300005     | 1    |
| 2         | CT4 18" TOAST CHUTE                  | B300013     | 1    |
| 3         | SO2 14.5" CRUMB TRAY ASSM            | B205129     | 2    |
| 4         | CT4H 18" HEAT SHUTTER                | B300059     | 2    |
| 5         | CT4-DUAL TOP COVER                   | B300233     | 1    |
| 6         | CT4-DUAL SIDE PANEL                  | B300230     | 2    |
| 7         | CT4 DUAL BACK PANEL                  | B205153     | 1    |
| 8         | CT4-2000 NOSE GUARD                  | B300807     | 2    |
| 9         | CONTROL, SPEED, 500 OHM CT4          | B200901     | 2    |
| 10        | BEARING ASSEMBLY 5/16"               | B201100     | 4    |
| 11        | TERMINAL BLOCK 5 POSITION            | B401033     | 4    |
| 12        | HEATERTUBE, QUARTZ 15 3/8 220V       | B204162     | 12   |
| 13        | SPRING, .038" DIA, 1.500" LENGTH     | B400261     | 4    |
| 14        | LEGS, BLACK 1" 1/4-20                | B400300     | 4    |
| 15        | CORD, POWER 12/3 60" 6-30P           | B401051     | 1    |
| 16        | CORD,FAN,HP-75.24-A                  | B401060     | 1    |
| 17        | RESET SWITCH                         | B401100     | 1    |
| 18        | SWITCH, 240V                         | B401102     | 4    |
| 19        | SWITCH, ROTARY POWER                 | B401103     | 2    |
| 20        | SWITCH FAN CERAMIC                   | B401107     | 1    |
| 21        | 230V MOTOR, FAN                      | B401211     | 1    |
| 22        | GUARD, FAN                           | B401220     | 1    |
| 23        | SPROCKET, 25B17 X 8MM                | B401300     | 4    |
| 24        | IDLE SHAFT SO2 14.5"                 | B401349     | 2    |
| 25        | BEARING, FRONT, SPRING-HOUSING       | B401352     | 4    |
| 26        | CT4-DUAL UPPER CHAMBER LABEL         | B401423     | 1    |
| 27        | CT4-DUAL LOWER CHAMBER LABEL         | B401424     | 1    |
| 28        | WIRE CONVEYOR BELT 14.5" X 41"       | B205138     | 2    |
| 29        | DRIVE MOTOR 208/240V RMS 344         | B401201     | 1    |
| 30        | DRIVE MOTOR, 208/240V REVERSED       | B401203     | 1    |
| 31        | CHAIN LADDER, 13.25"                 | B401386     | 1    |
| 32        | CHAIN , LADDER, 26"                  | B401387     | 1    |
| 33        | STRAIGHT 12 GA STRAIN RELIEF BUSHING | B400321     | 1    |
| 34        | CT4-DUAL RESET LABEL                 | B405038     | 1    |
| 35        | SHAFT, DRIVE, 14.5"                  | B401342     | 2    |
| 36        | 7/8 WIRE CLAMP                       | B400331     | 1    |
| 37        | SILVER PUSH-ON KNOB                  | B405018     | 6    |
| 38        | SILVER PUSH-ON KNOB W/ SET SCREW     | B405019     | 2    |